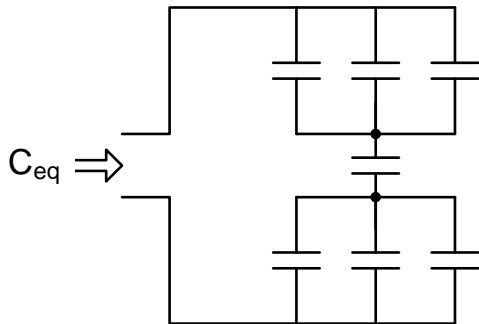


1. Find C_{eq} if all capacitors are $1\mu\text{F}$.



$$\begin{aligned} C_{eq} &\Rightarrow \begin{array}{c} \text{---} \\ | \\ \text{---} \\ | \\ \text{---} \\ | \\ \text{---} \end{array} \begin{array}{l} 3\mu\text{F} \\ 1\mu\text{F} \\ 3\mu\text{F} \end{array} \\ &= \frac{1}{\frac{1}{3} + \frac{1}{1} + \frac{1}{3}} \mu\text{F} \\ &= 0.6\mu\text{F} \\ &= \boxed{600\text{ nF}} \end{aligned}$$